

PROJECT 2 - FINAL

BROOKHAVEN AQUATIC CENTER

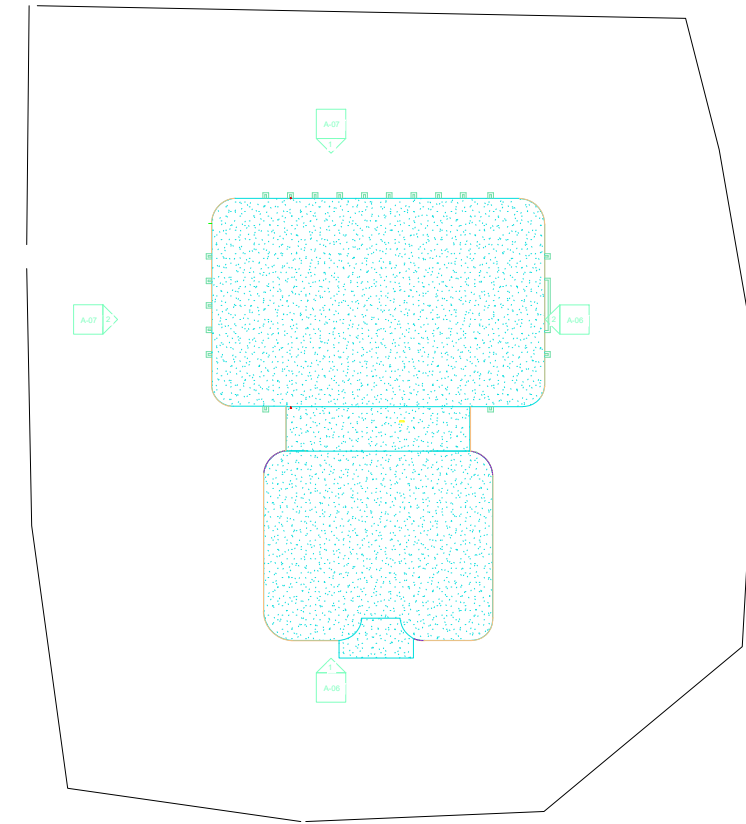
300 FRANCIS LANDAU PLACE,
MASTIC, NY
TAX MAP #:
0200-938.00-05.00-023.001

NOTE:
BASEMENT- AREAS OF THE BASEMENT
WERE INACCESSIBLE. APPROXIMATE
DIMENSIONS USED
CONTRACTOR TO VERIFY ALL DIMENSION
AND CONDITIONS IN THE FIELD



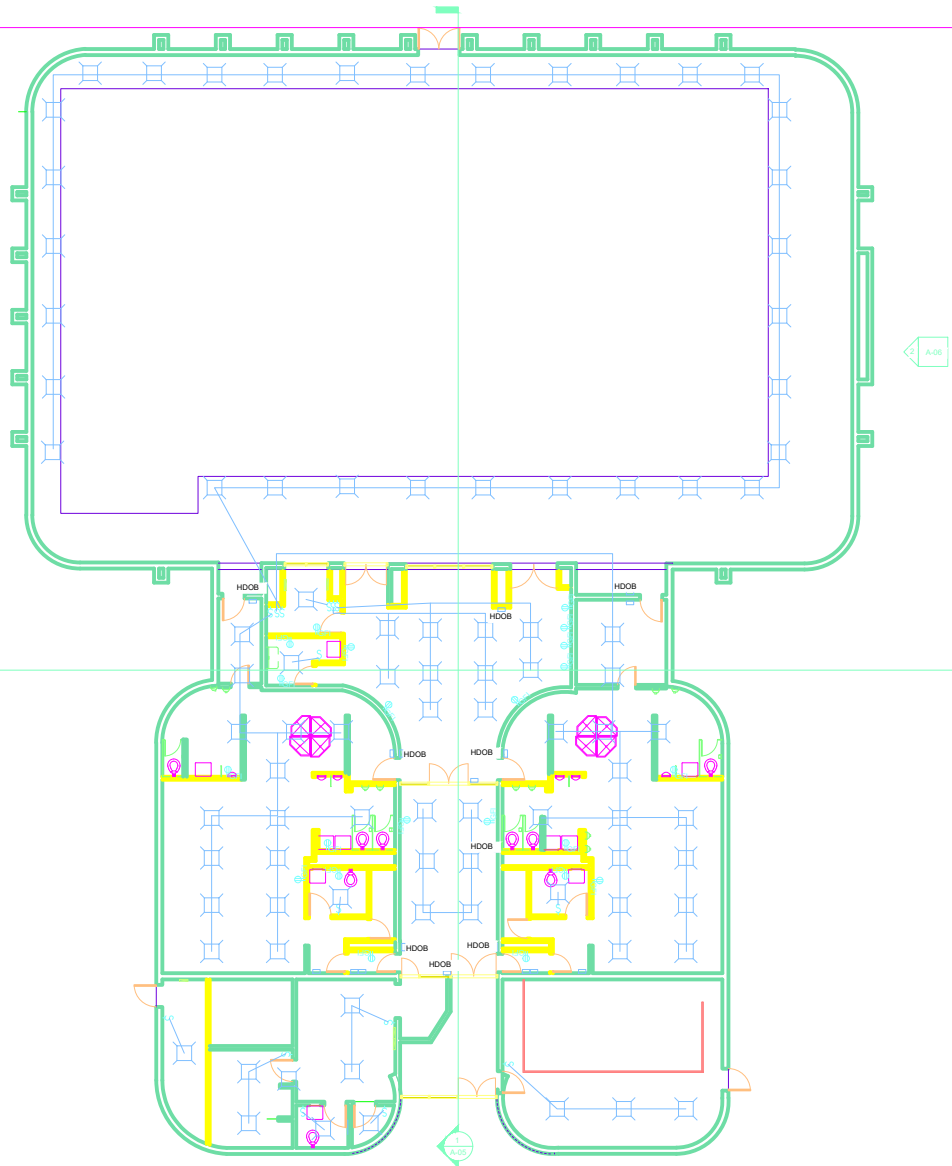
TABLE R301.2(1) CLIMATIC AND GEOGRAPHIC DESIGN CRITERIA

GROUND SNOW LOAD ⁱ	WIND SPEED ^d (mph)	SEISMIC DESIGN CATEGORY ^e	SUBJECT TO DAMAGE FROM			ICE BARRIER UNDERLAYMENT REQUIRED ^g	FLOOD HAZARDS ^f
			Weathering ^a	Frost line depth ^b	Termite ^c		
20	130	C	SEVERE	3'	HEAVY	YES	HIGH



① Site
1" = 20'-0"





ELECTICAL KEY

 DUPLEX GROUND FAULT RECETACLE

 SINGLE SWITCH

 CEILING MOUNTED FIXTURE

 HANDICAP DOOR OPENER BUTTON

 ELECTRICAL PANEL



ELECTRICAL PLANS
1/8" = 1'-0"

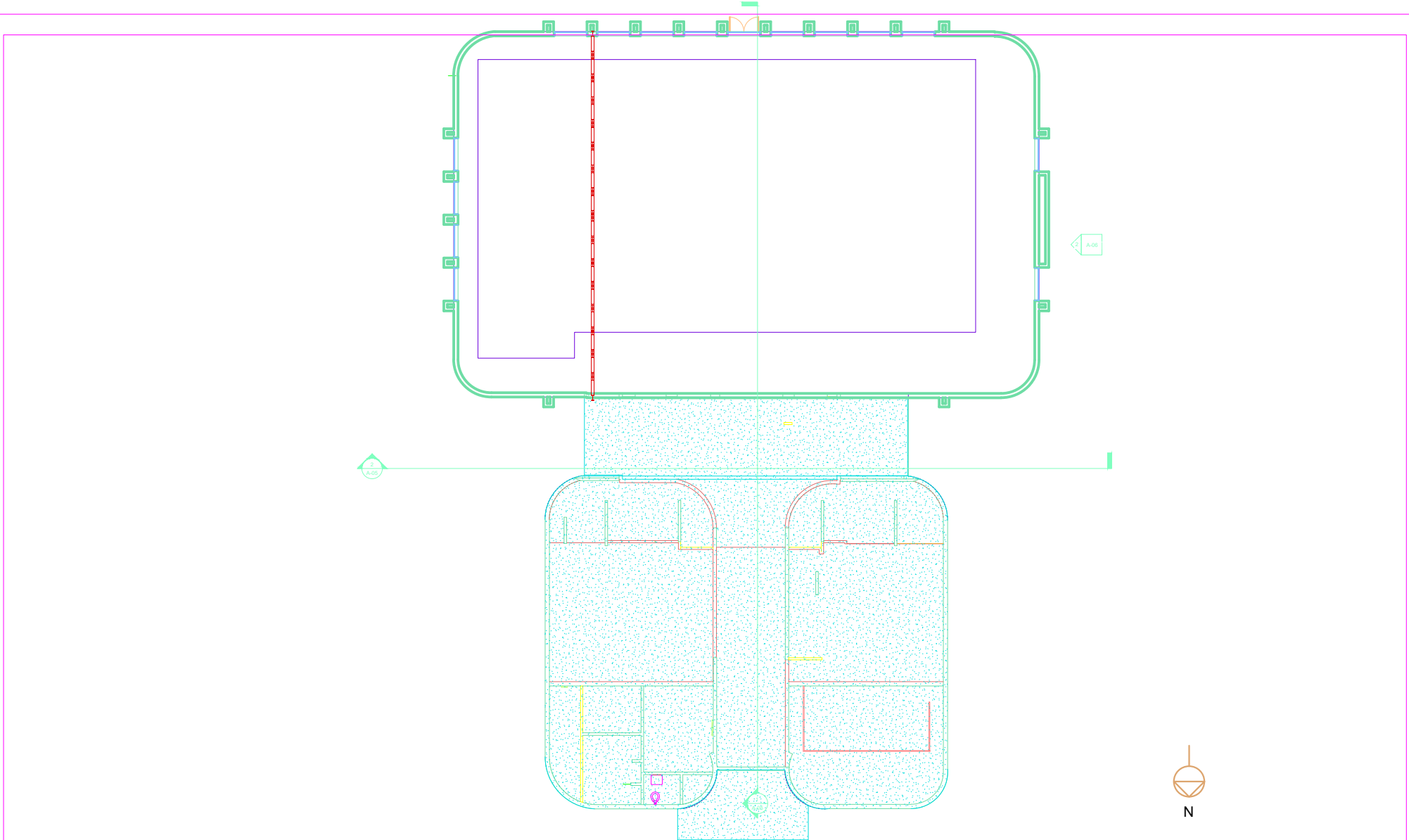
**Farmingdale
State College**
State University of New York

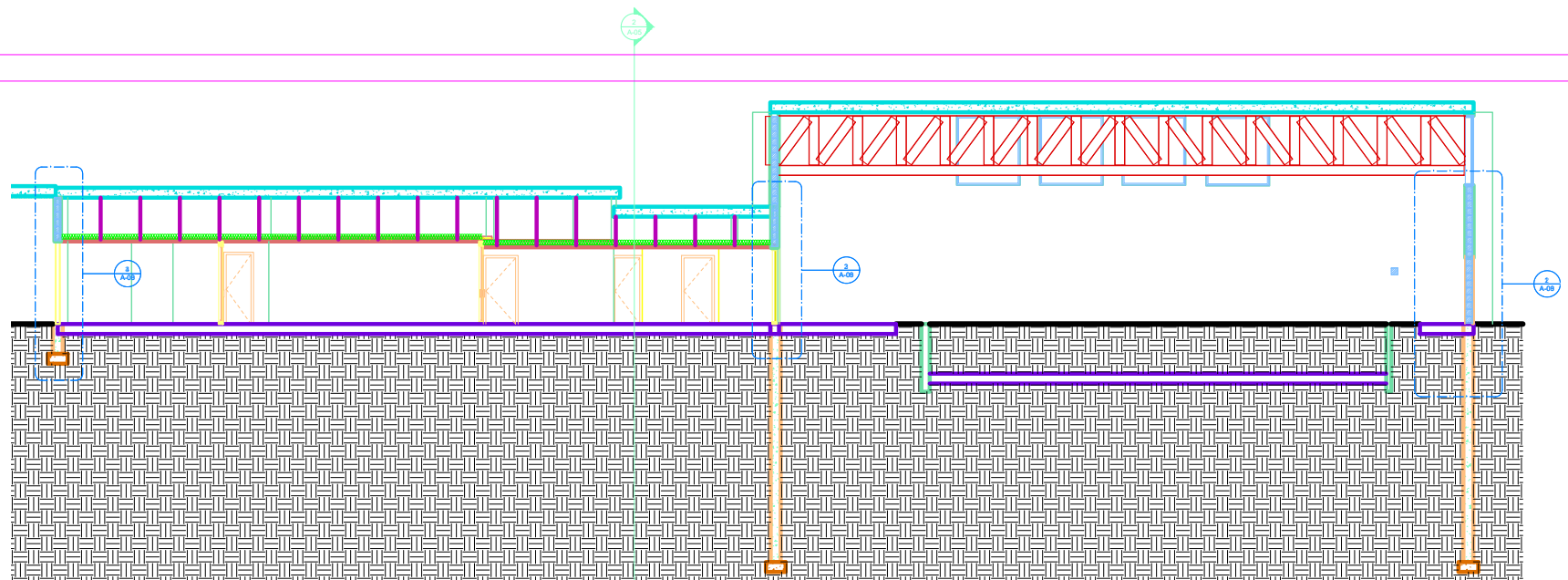
ARC 310
CONSTRUTION DESGIN
SPRING 2023- 22013



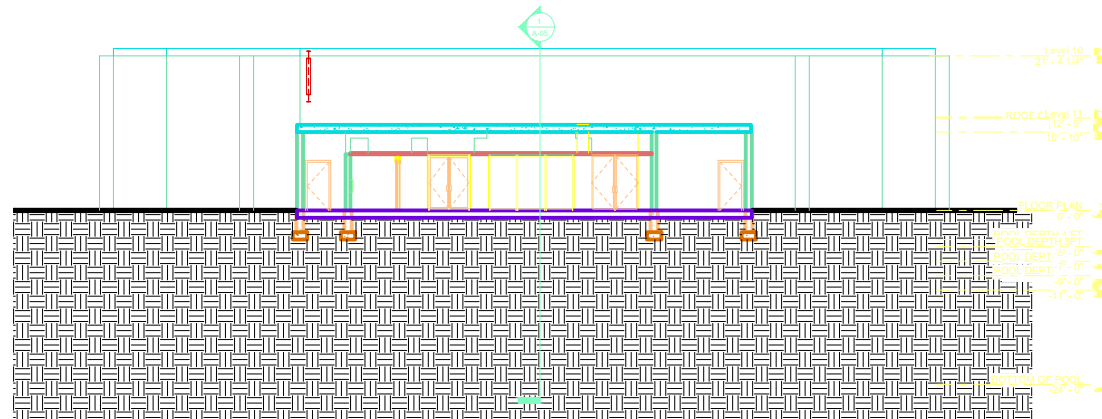
WINSTON, WILLIAM, DAVID, TAJESH
ELECTRICAL PLAN

A-03



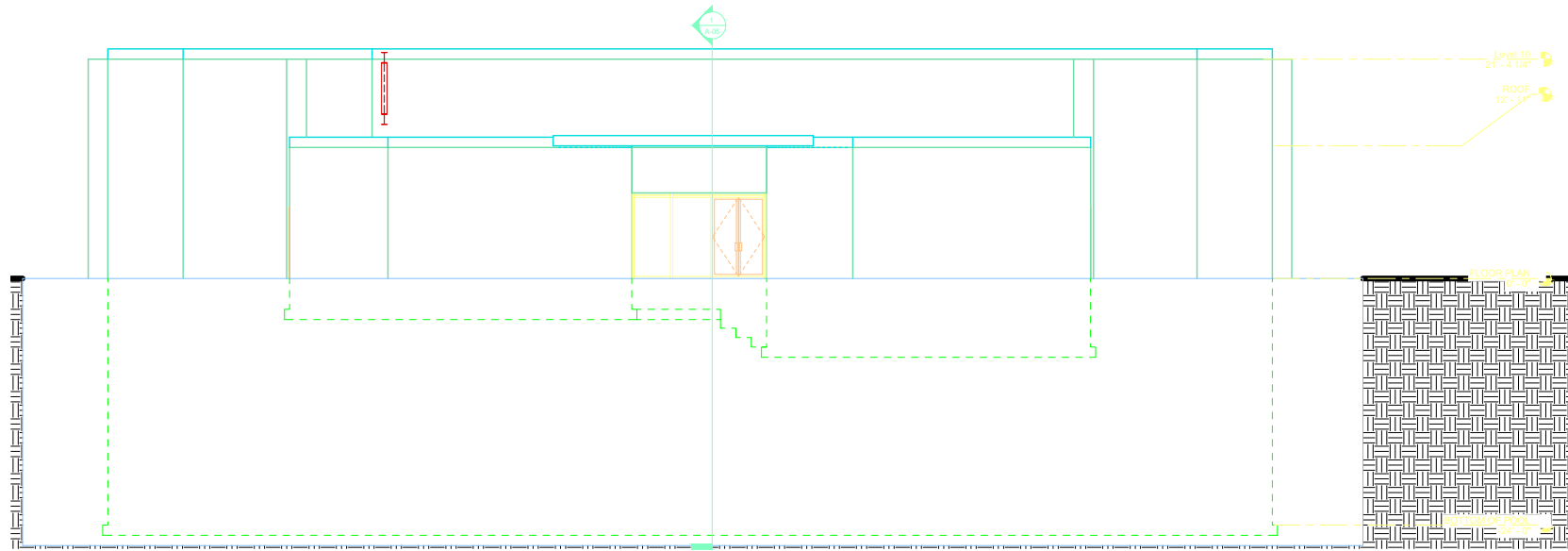


① LONGITUDE SECTION
3/16" = 1'-0"

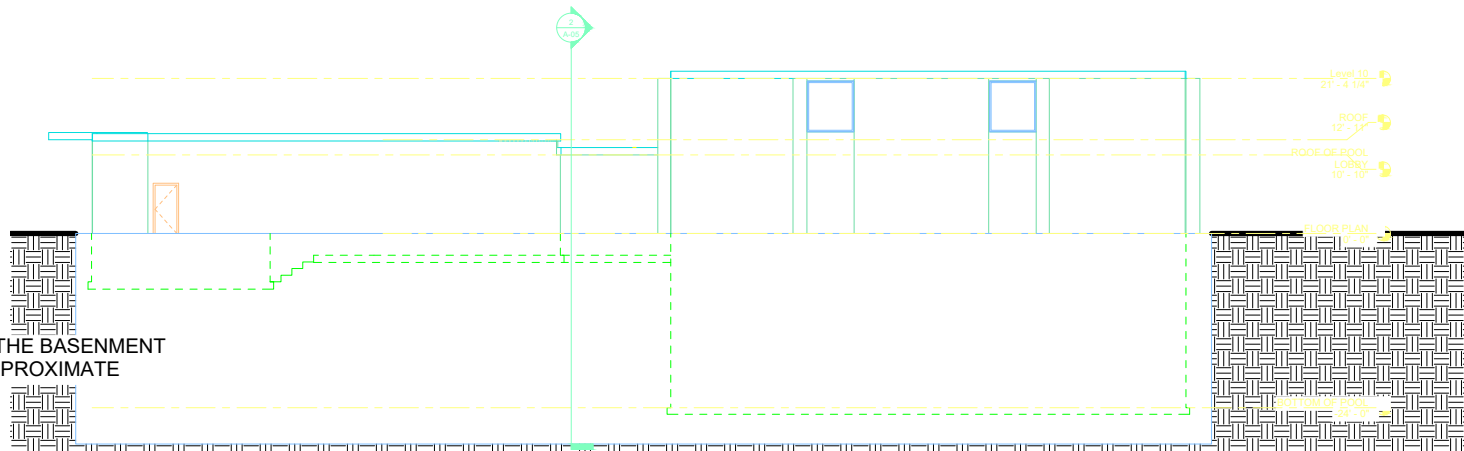


② LATITUDE SECTION
1/8" = 1'-0"

NOTE:
BASEMENT- AREAS OF THE BASEMENT
WERE INACCESSIBLE. APPROXIMATE
DIMENSIONS USED

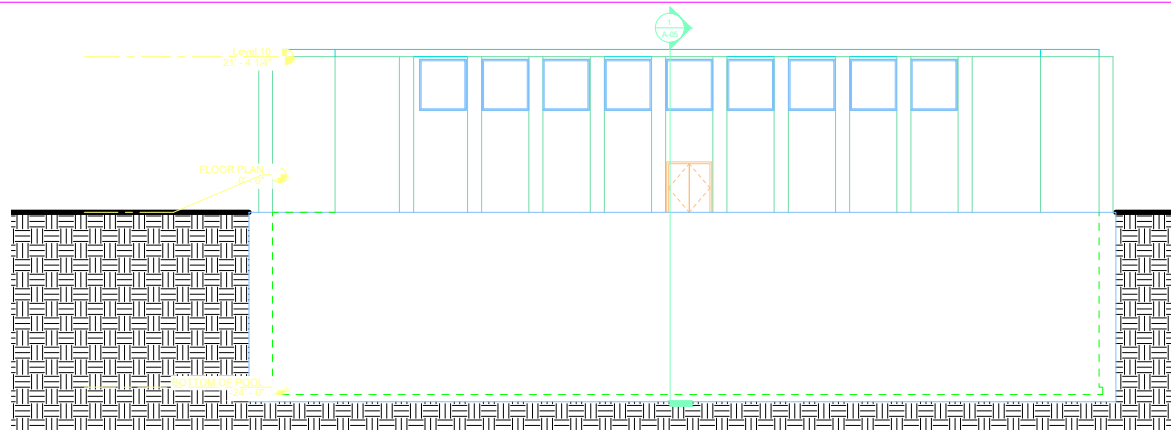


① SOUTH FRONT ELEVATION
3/16" = 1'-0"



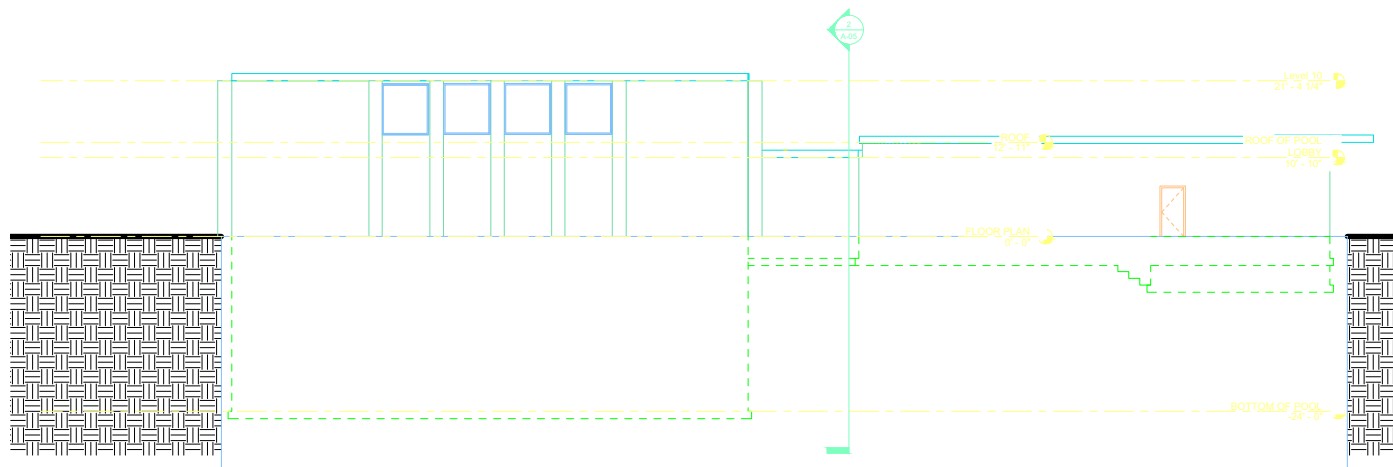
NOTE:
BASEMENT- AREAS OF THE BASEMENT
WERE INACCESSIBLE. APPROXIMATE
DIMENSIONS USED

② East
1/8" = 1'-0"

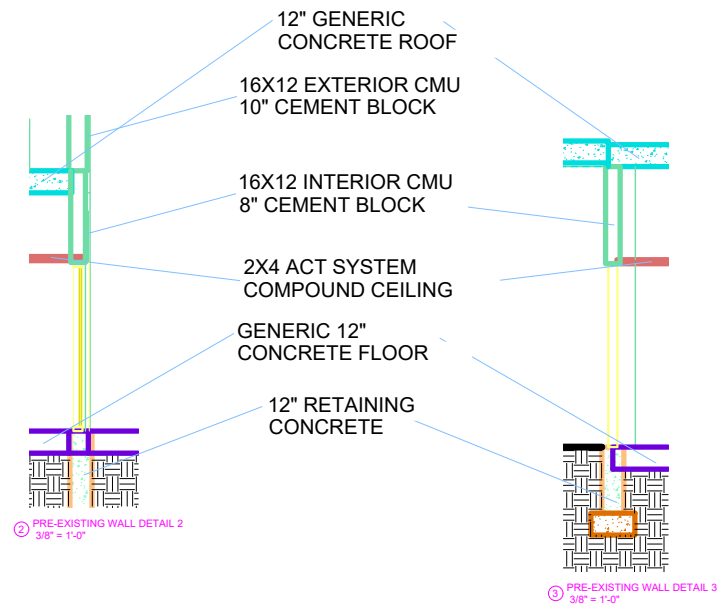
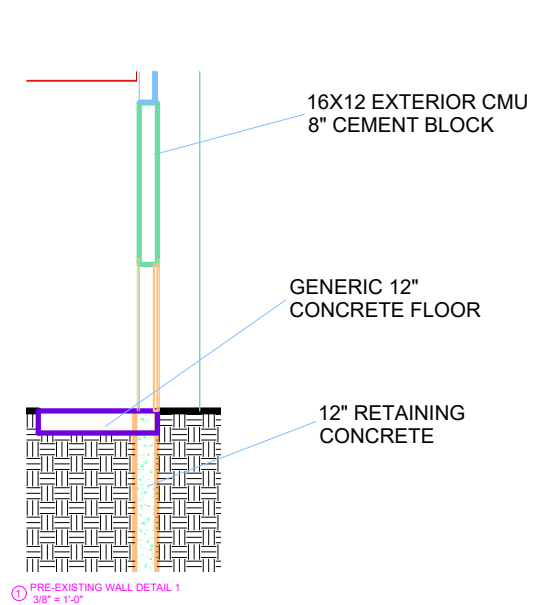


NOTE:
BASEMENT- AREAS OF THE BASEMENT
WERE INACCESSIBLE. APPROXIMATE
DIMENSIONS USED

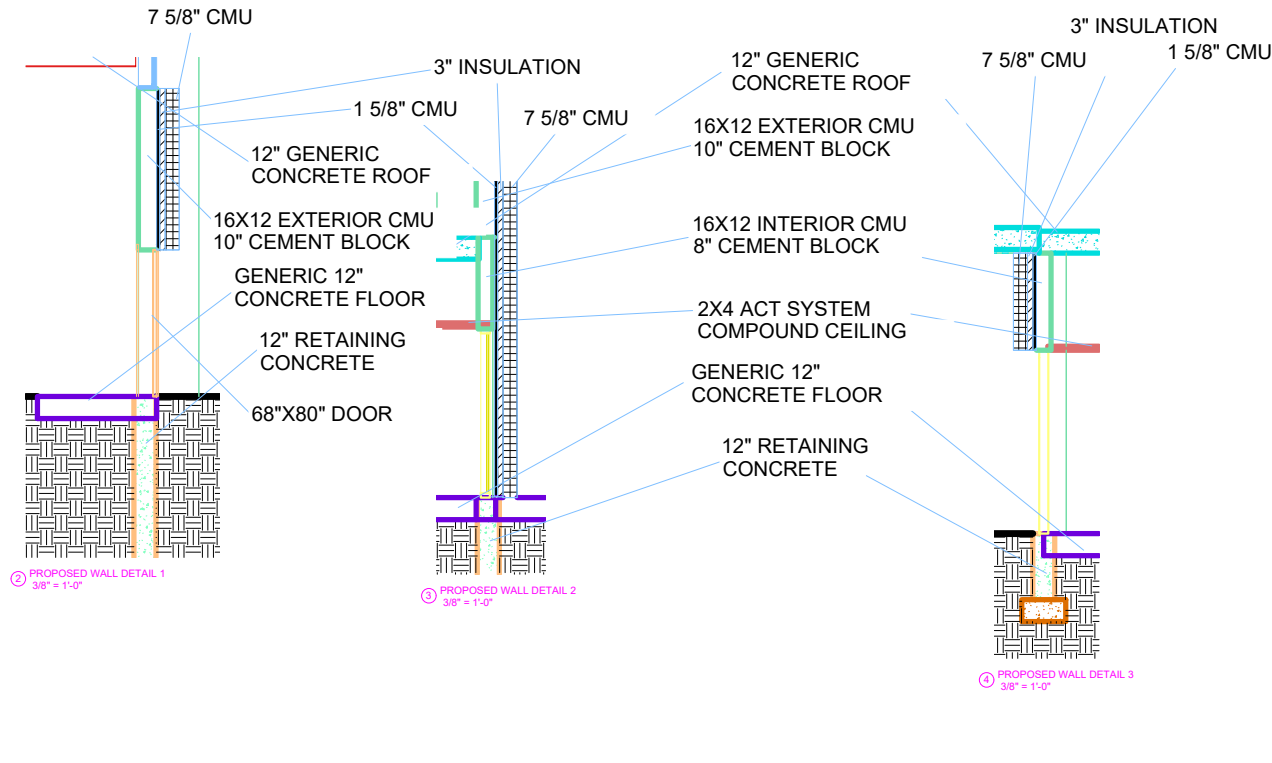
① North
1/8" = 1'-0"



② West
1/8" = 1'-0"



WITH SOME RESEARCH BEING DONE, WE FOUND AN INTERESTING WAY OF INSULATION MASONRY BUILDINGS, AND THAT IS WITH SPECIFIC BLOCKS MADE OF DIFFERENT MATERIAL, WHICH WILL SLIGHTLY THICKEN THE BUILDING ON THE OUTSIDE HOWEVER NO CHANGES WILL BE MADE INSIDE. THIS IS MADE BY THE COMPANY ECHELON MASONRY.



m Schedule 2						Door Schedule		
		Ceiling	Floor Finish	Wall Finish		Height	Thickness	Width
POOL	7785 SF	BRICK		TILE	BRICK/TILE	6'-8"	0'-2"	2'-10"
POOL LOBBY	701 SF	RIGGED BRICK	DROP	TILE	RIGGED BRICK	7'-0"	0'-2"	2'-6"
CONNECTING LOBBY	350 SF	RIGGED BRICK	DROP	TILE	RIGGED BRICK	7'-0"	0'-2"	2'-6"
CHLORINE ROOM	670 SF	WHITE PAINTED	DROP	TILE	WHITE PAINTED	7'-8 1/4"	0'-2"	5'-3 1/2"
WOMAN'S BATH	1022 SF	TILE	DROP	TILE	WHITE PAINTED	7'-8 1/4"		5'-0 3/4"
MEN'S BATH	952 SF	TILE	DROP	TILE	WHITE PAINTED	7'-8 1/4"		5'-1 1/4"
MAIN LOBBY	162 SF	RIGGED BRICK	DROP	TILE	RIGGED BRICK	7'-8"	0'-2"	6'-5"
FIRE CONTROL ROOM	121 SF	WHITE PAINTED	DROP	TILE	WHITE PAINTED	6'-8"	0'-2"	3'-0"
OFFICE	75 SF	WHITE PAINTED	DROP	TILE	WHITE PAINTED	6'-8"	0'-2"	3'-0"
FAMILY CHANGING	54 SF	WHITE PAINTED	DROP	VINYL	WHITE PAINTED	6'-8"	0'-2"	3'-0"
STAFF BREAKROOM	278 SF	WHITE PAINTED	DROP	CARPET	WHITE PAINTED	7'-0"	0'-2"	2'-8"
STAFF OFFICE	149 SF	WHITE PAINTED	DROP	CARPET	WHITE PAINTED	6'-8"	0'-2"	2'-6"
STAFF BATH	41 SF	WHITE PAINTED	DROP	TILE	WHITE PAINTED	6'-8"	0'-2"	3'-0"
CLOSET	24 SF	WHITE PAINTED	DROP	CARPET	WHITE PAINTED	6'-8"	0'-2"	3'-0"
Count		Width	Type	Sill Height	Height	6'-8"	0'-2"	3'-0"

1	6'-5"	36" x 48"	14'-0"	7'-0"
1	6'-5"	36" x 48"	14'-0"	7'-0"
1	6'-5"	36" x 48"	14'-0"	7'-0"
1	6'-5"	36" x 48"	1'-0 1/4"	7'-0"
1	6'-5"	36" x 48"	14'-0"	7'-0"
1	6'-5"	36" x 48"	14'-0"	7'-0"
1	6'-5"	36" x 48"	14'-0"	7'-0"
1	6'-5"	36" x 48"	14'-0"	7'-0"
1	6'-5"	36" x 48"	14'-0"	7'-0"
1	6'-5"	36" x 48"	14'-0"	7'-0"
1	6'-5"	36" x 48"	14'-0"	7'-0"
1	6'-5"	36" x 48"	14'-0"	7'-0"
1	6'-5"	36" x 48"	14'-0"	7'-0"
1	6'-5"	36" x 48"	14'-0"	7'-0"
1	6'-5"	36" x 48"	14'-0"	7'-0"

