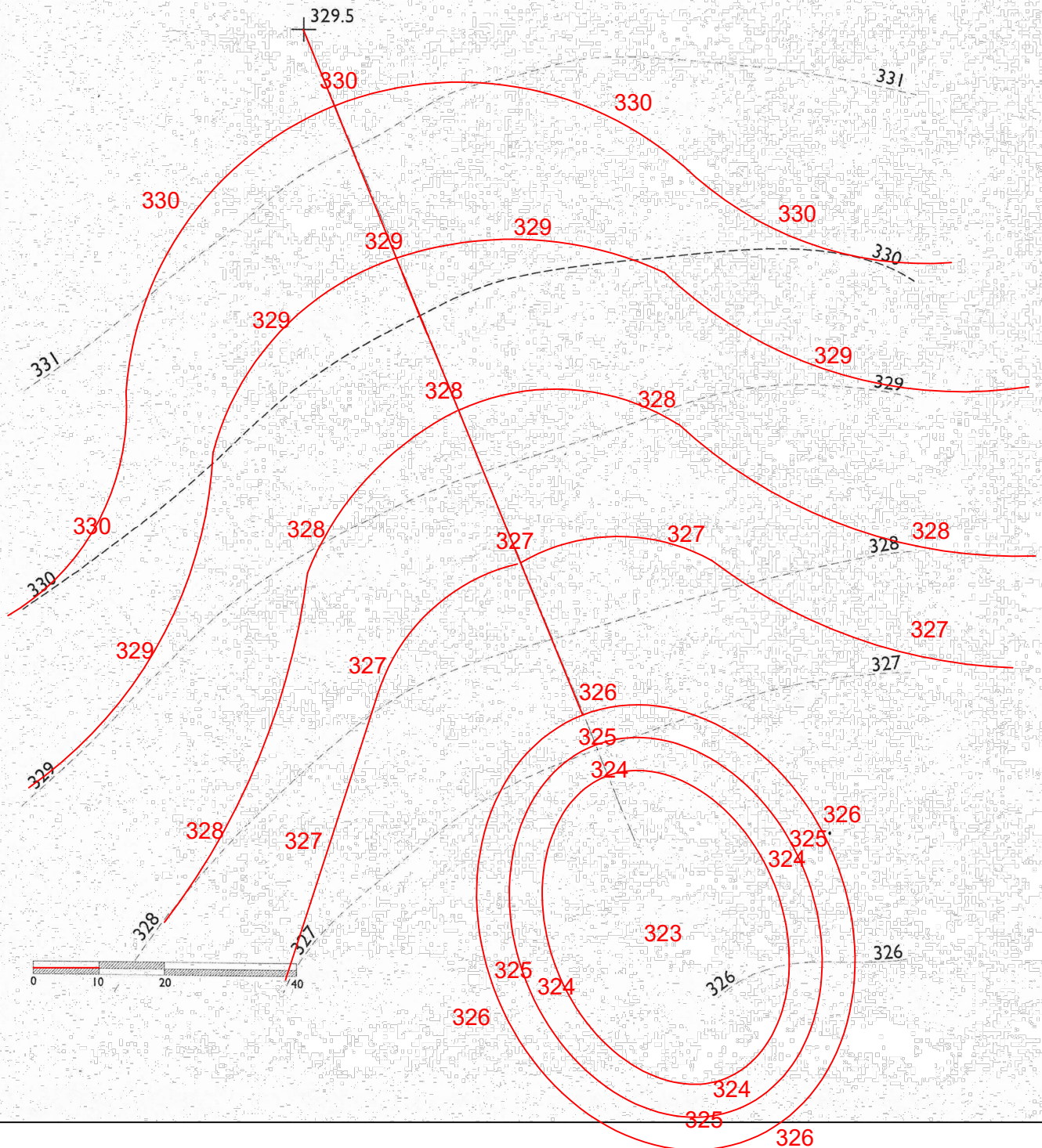


3-8) Draw a swale with a 3' deep retention pond.

- a) Swale should have a minimum slope of 4% and a maximum slope of 5:1.
- b) Bottom of the retention pond should be 323 and the sides should have a maximum slope of 5:1.
- c) Label all parts of the pond and swale.

USING THE SLOPE OF 4%, THE HORIZONTAL DISTANCE FROM POINT 329.5 TO 330 WAS 12.5 FEET. THERE AFTER FOR EVERY 1 FOOT OF RISE, WITH 4% SLOPE, THE RUN WAS 25 FEET.



USING THE SLOPE OF 20% FOR THE POND, FOR EVERY FOOT OF RISE, THE RUN CAME OUT TO BE 5 FEET.