



Photo and Detail Drawing Dictionary



By Tyrone Clarke and William Cortez

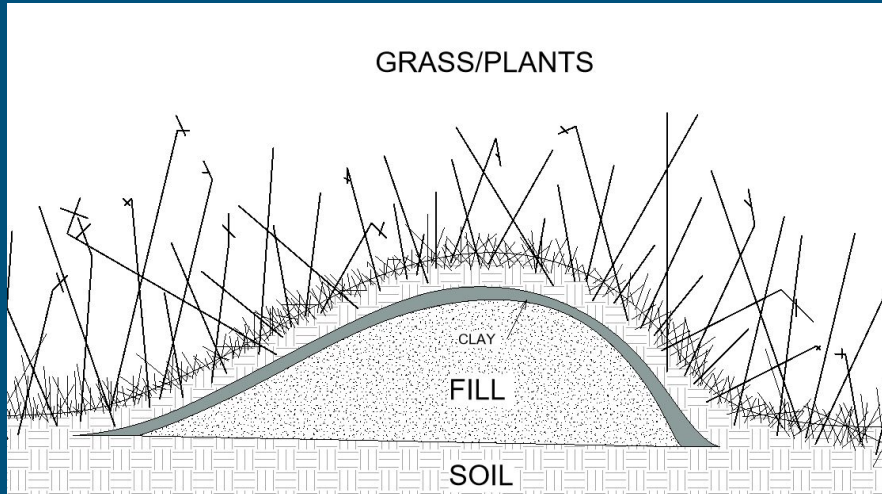


GLOSSARY

1. BERM
2. DECIDUOUS TREE
3. BUFFER
4. BULB-OUT
5. REINFORCED CONCRETE RETAINING WALL
6. CATCH BASIN
7. CULVERT
8. SIGHT TRIANGLE
9. CONCRETE ACCESSIBLE RAMP
10. TYPICAL PLANTED PARKING LOT
11. SEPTIC TANK
12. DRYWELL/ LEACHING POOL
13. TRENCH DRAIN
14. INVERT OF A PIPE
15. MOUNTABLE/ ROLLED CURB
16. PERMEABLE PAVERS
17. CONCRETE PAVERS ON CONCRETE BASE FOR VEHICLES
18. CONCRETE SIDEWALK CONTROL AND EXPANSION JOINTS
19. SILT FENCE
20. SWALE

Berm

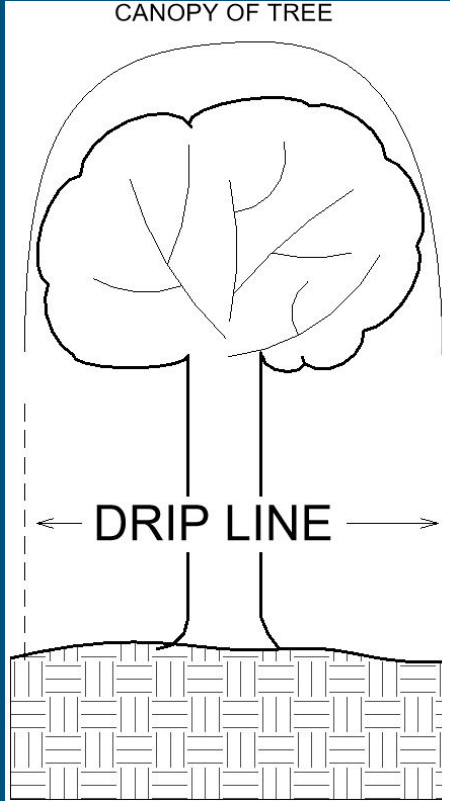
- A berm is construction of compacted material that prevents stormwater runoff from entering an area and directs water to a controlled drainage outlet.



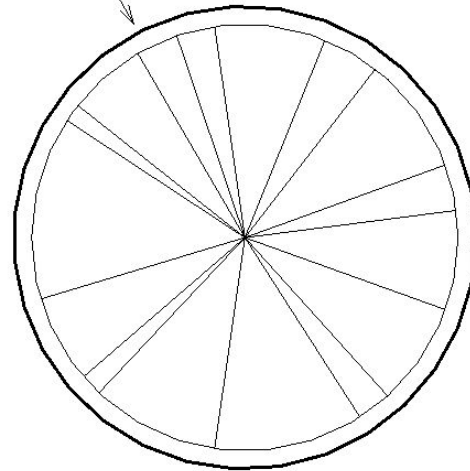
https://www.swoknews.com/styles/garden/berms-in-your-landscape/article_866e7d16-ec58-5338-ad33-84b69a053f13.html

Deciduous Tree

A deciduous tree is a tree that loses its leaves during the fall and regains them in the spring. These trees are the best to have on the south side of a property to block the sun rays in the summer.



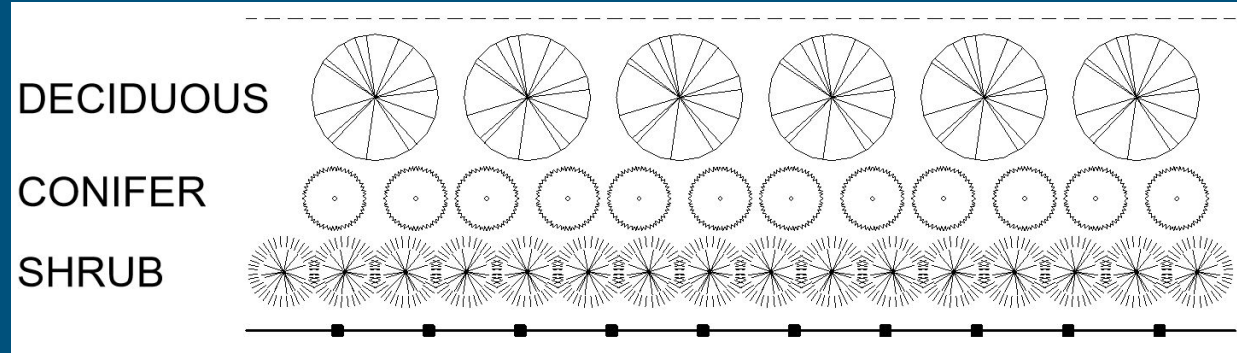
DRIP LINE



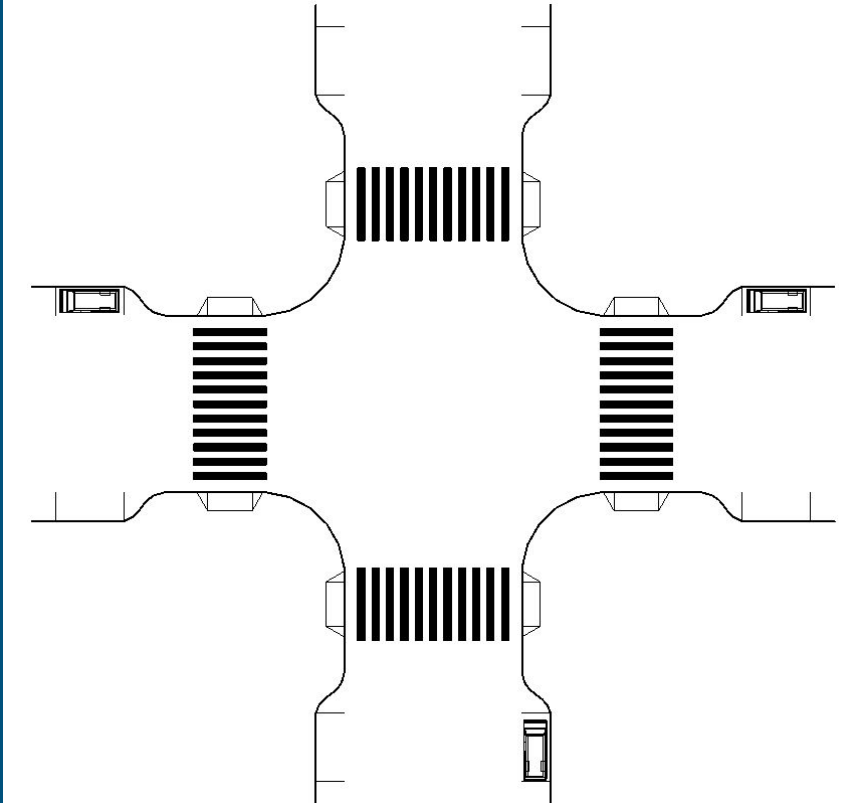
<https://www.arboroperations.com.au/media-centre/the-best-deciduous-trees-for-australian-gardens/>

Buffer

A **buffer** is an area of land along the perimeter of the property, re propose the planting of trees and shrubs, or fence. Which purpose is to screen between two neighboring properties.



Bulb-out



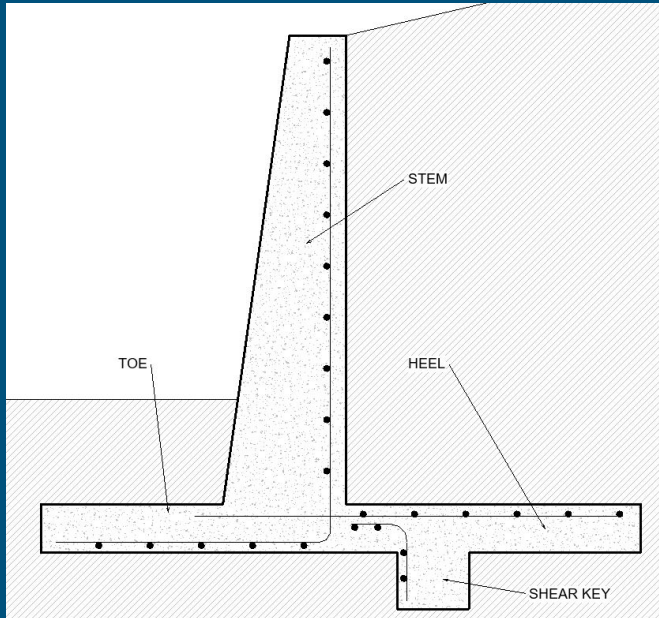
A bulb-out is an extension on the sidewalk into the parking lane to narrow the roadway and provide additional space to pedestrians.



https://en.wikipedia.org/wiki/Curb_extension

Reinforced Concrete Retaining Wall

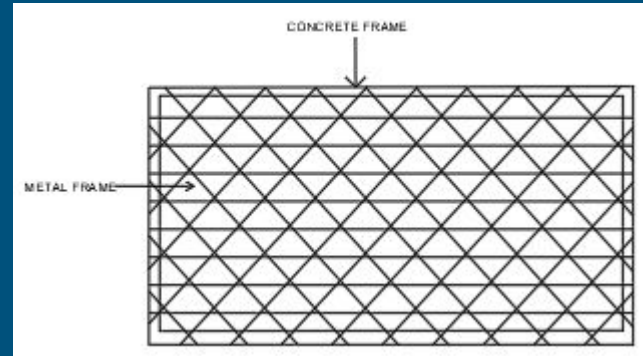
These are walls that are either L-shape or inverted T-shape, this kind of retaining wall that consists of a stem and a base slab which sits under the backfill.



<https://homeguide.com/costs/concrete-retaining-wall-cost>

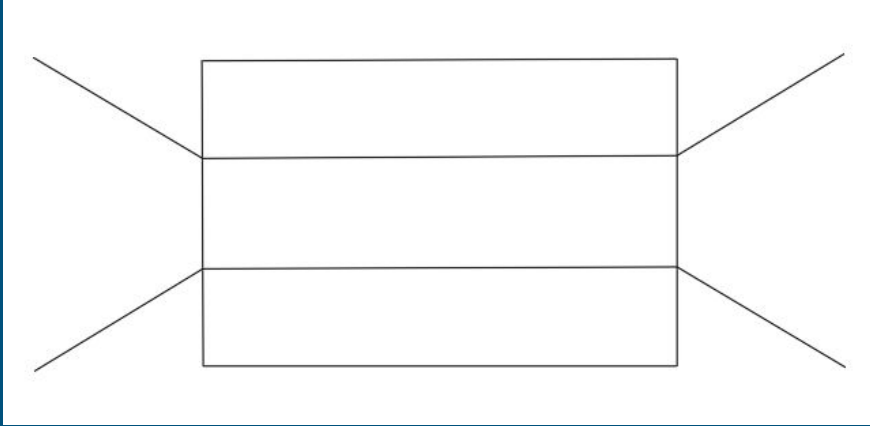
Catch Basin

A catch basin is a vault at a point where a street gutter discharges into a sewer. To hold vast amount of water, or bulky matter that would have not pass easily through the sewers



Culvert

A culvert is a tunnel under a road or railroad that can allow water to pass underneath it.

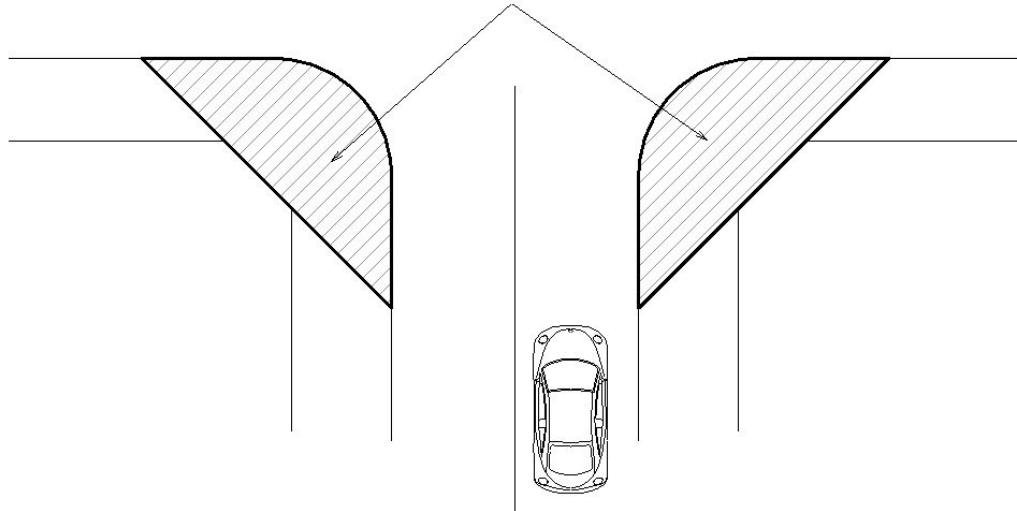


<https://www.ayresassociates.com/culverts-the-essential-infrastructure-you-never-knew-you-needed/>

Sight Triangle

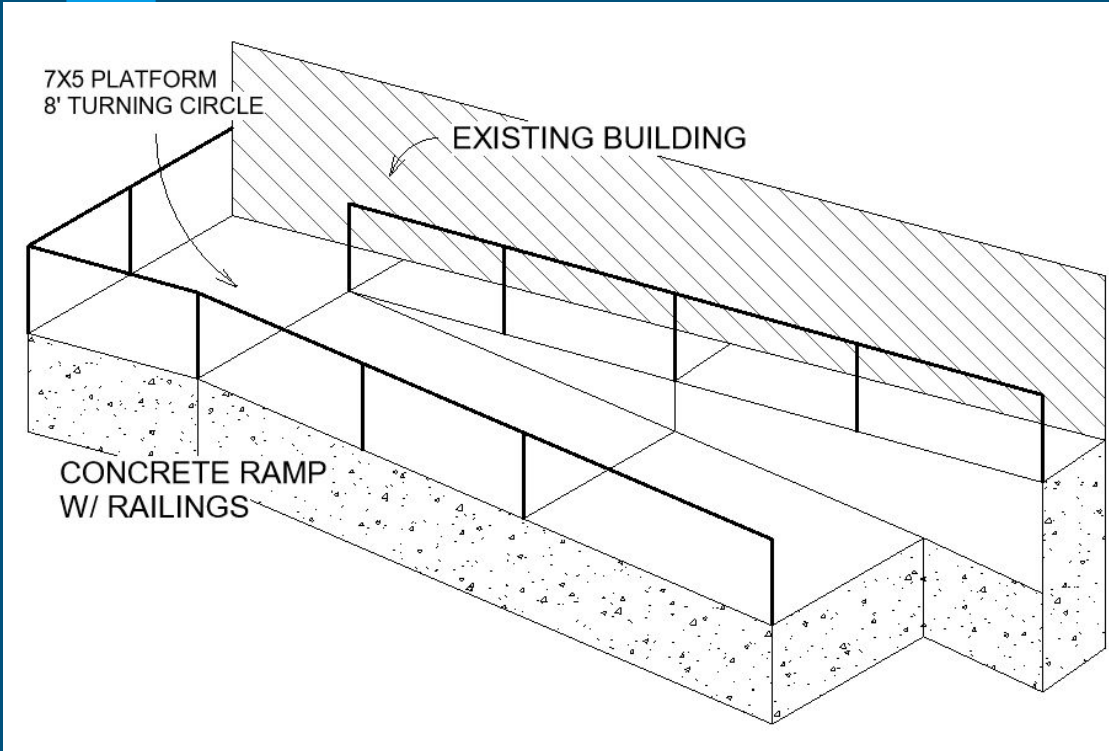
A sight triangle is an area at the corner of intersections of roads where views of oncoming traffic should be obstructed.

30' VIEW, 45 DEGREES
NO OBSTRUCTIONS



<https://cityofls.net/development-services/neighborhood-services/signage>

Concrete Accessible Ramp



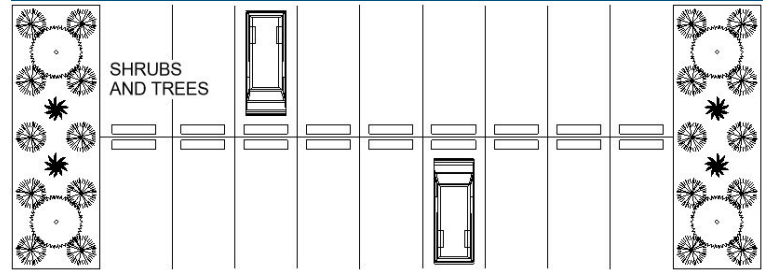
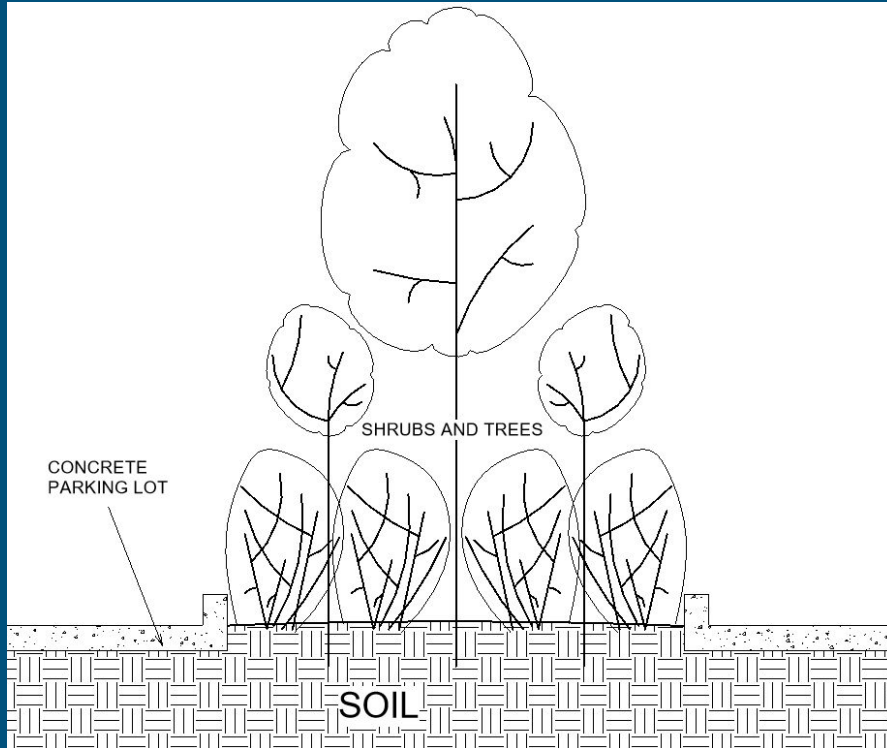
This ramp is an access route compliant with ADA standards with a slope of 1:20 or greater. This is to allowed handicap people to go up elevated heights.



<https://www.readingprecast.com/products/ada-ramps/>

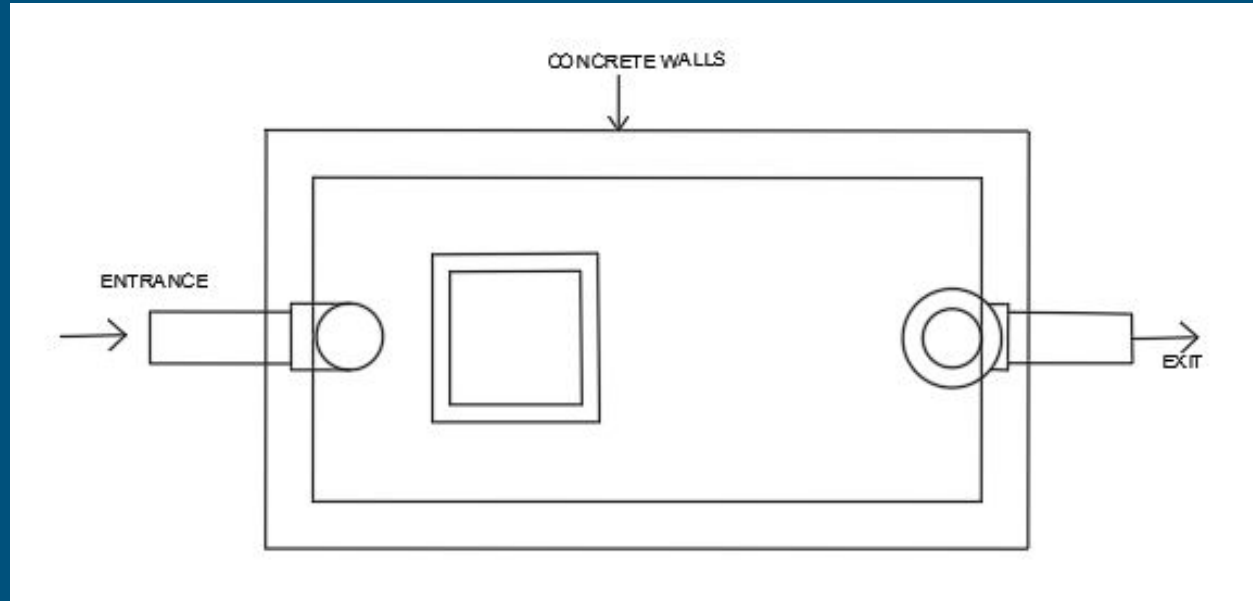
Planted Parking lot Island

Planted islands are used to define parking lot circulations. They can also provide sight distance at a insertion of a drive aisles.



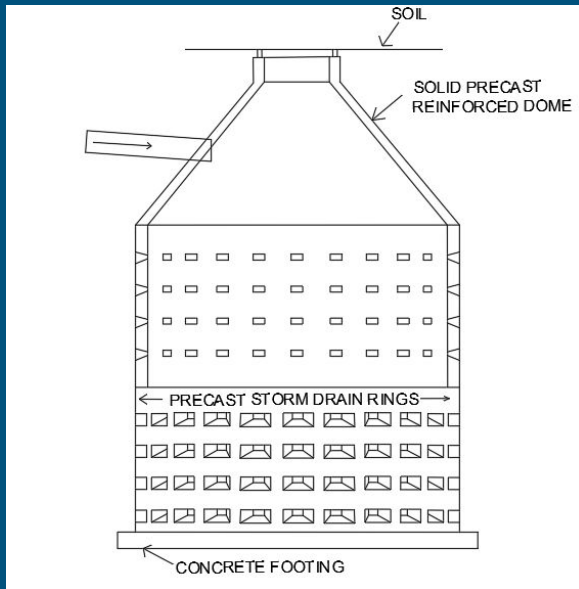
Septic Tank

A septic tank is an underground chamber made from a various material, mainly concrete, which help process wastewater when a sewage line in not available to the home.



Dry Well/ Leaching Pool

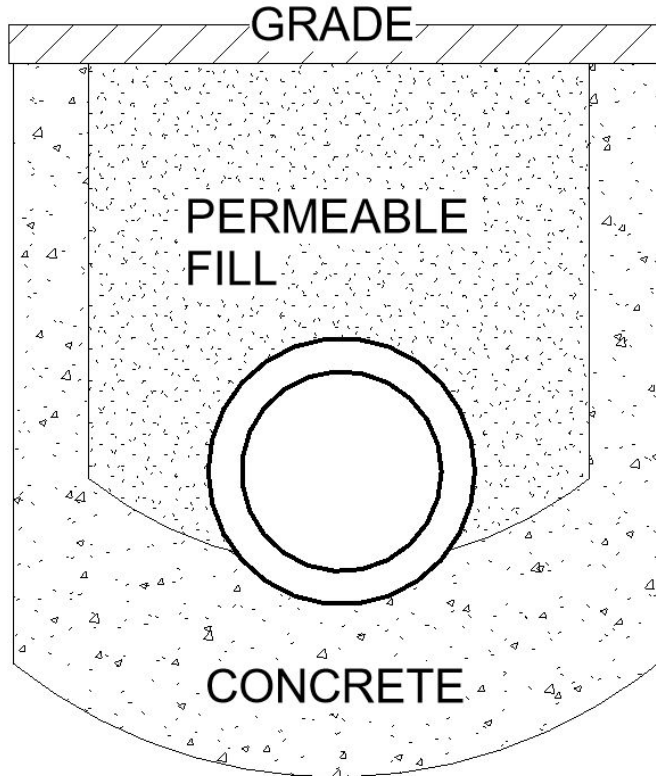
A dry well/ leaching pool are pits in which concrete walls have been put down and allows waste water to flow through and perforate into the soil.



https://104cliffroadeast.com/?page_id=955

Trench Drain

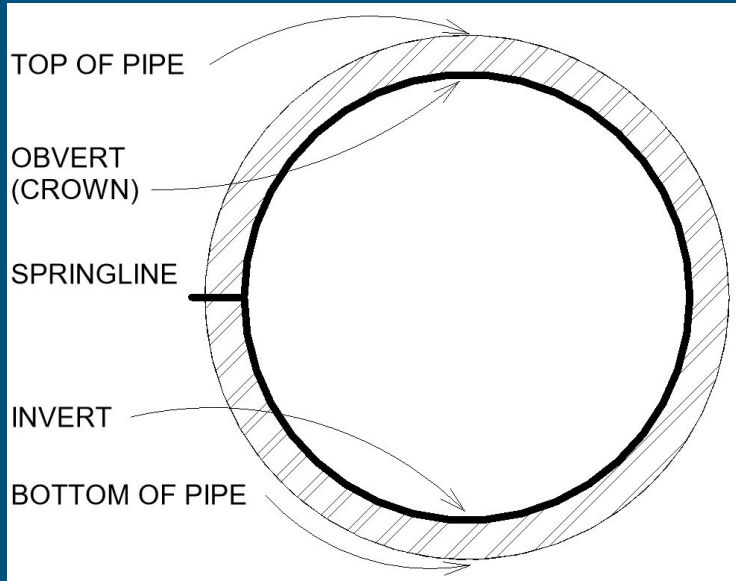
A trench drain is an elongated drainage system used to remove excess water from the area, used as a drainage channel covered with grates.



<https://www.duratrench.com/product-page/8-wide-precast-trench-drain/>

Invert of a Pipe

An invert pipe is the lowest point upon which water can flow on the inside.



https://en.wikipedia.org/wiki/Invert_level

Mountable/ Rolled Curb

A mountable curb is a curb with a slope face that allowed vehicles to go over them without damaging the tires or wheel.

ROUNDBABOUT CURB

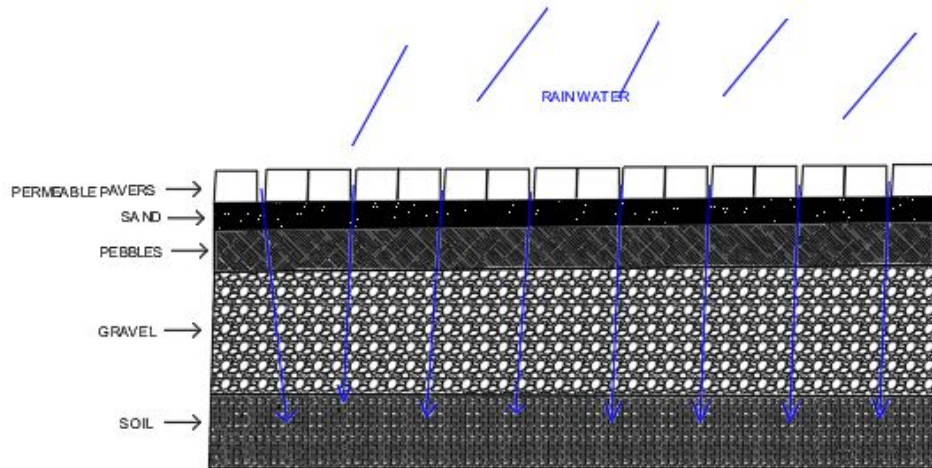


ROAD/DRIVEWAY CURB



Permeable Pavers

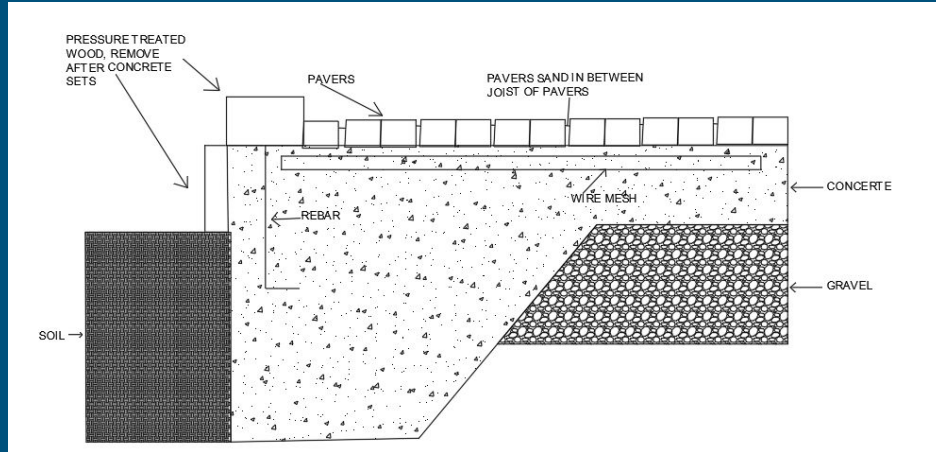
Permeable pavers are a porous surface which catches rainfall and surface runoff, holding it in the reservoir while it slowly allowing it to penetrate into the soil below.



<https://www.istockphoto.com/photo/permeable-pavers-gm114320215-2122912>

Concrete pavers on Concrete Base for Vehicles

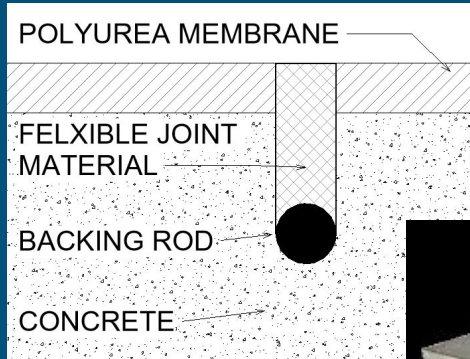
A concrete base is used to prevent the movement of dirt from cracking the slab meant for vehicles.



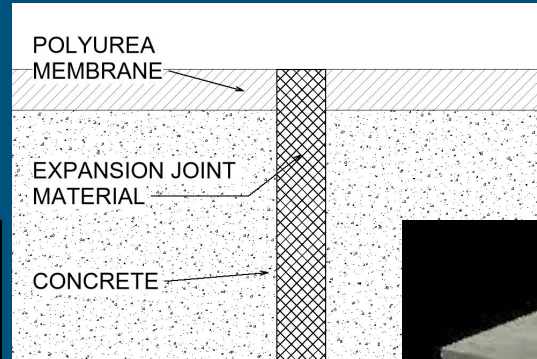
<https://australianpaving.com/knowledge-centre/diy-driveway-path-pavers/why-choose-pavers-over-concrete/>

Concrete Sidewalk Control and Expansion Joints

A control and expansion joint on a concrete sidewalk is to allow the slab to crack during expansion and contraction.

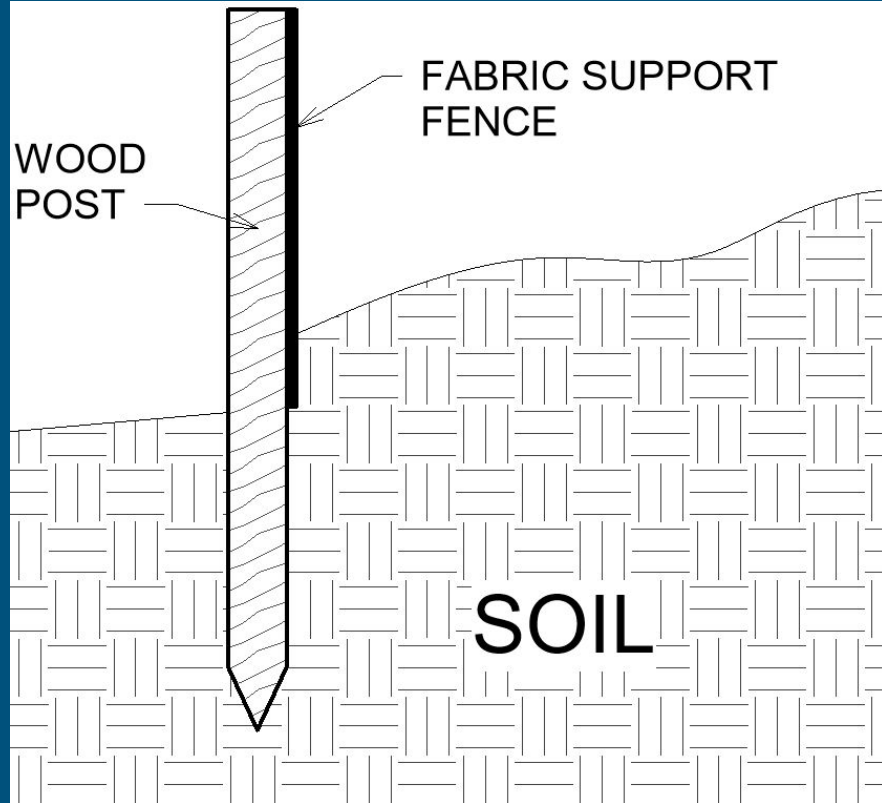


<https://imiweb.org/wp-content/uploads/2015/10/07.130.0131-Epoxy-terrazzo-Control-joint-detail.pdf>



<https://www.arfenusa.com/Assets/Documents/Slab-Joint-2021-Aralik-EN.pdf>

Silt Fence



A silt fence purpose is to retain the soil on disturbed land.



<https://eastcoastsitework.com/services/silt-fence/>

Swale

A swale is a ditch that is created to prevent flooding by capturing rainwater runoff from roads and properties to groundwater.

